

# VIO-S

## SAFETY SENSOR FOR AUTOMATIC SLIDING DOORS

Commercial sheet



### 3-DIMENSIONAL SAFETY

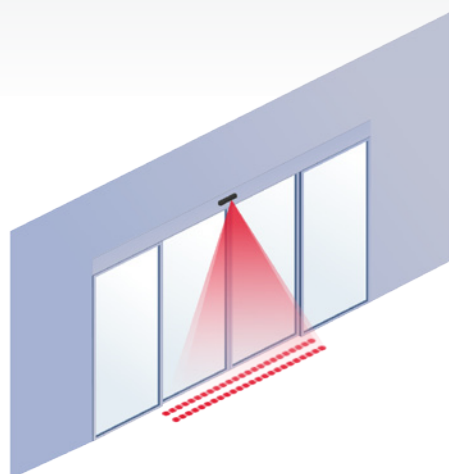
#### DESCRIPTION

The **VIO-S** is a presence sensor made up of a double failsafe active infrared curtain. The three-dimensional area of the infrared curtain, without safety beams, protects people from any contact with the doors.

COMPLIANT WITH  
**EN 16005**

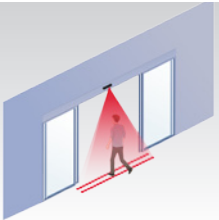
#### FEATURES

- Simple adjustments using DIP-Switches.
- High protection of individuals, thanks to the two 24-infrared spot failsafe curtains. (EN 16005)
- Optimum performance thanks to high levels of active, self-adapting infrared immunity.
- Adjustment of the infrared curtain width with the prisms. (curtains of 12 or 24 spots depending on the prism used)
- Mounting height of up to 3 metres.

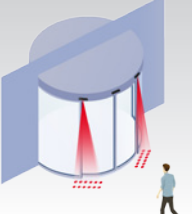


VIO-S ■

APPLICATIONS

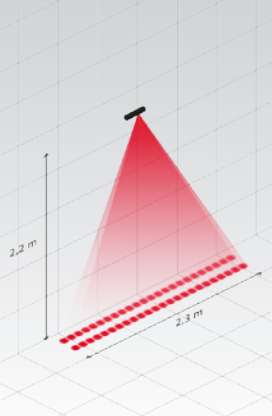


**Double-leaf sliding door**




**Curved door**

DETECTION RANGE




**Infrared curtain**  
2.35 m x 3.5 cm @ 2.2 m

VIO RANGE



**VIO-D**  
Combined opening and safety sensor for sliding doors.



**VIO-M**  
Motion radar sensor for opening automatic doors.

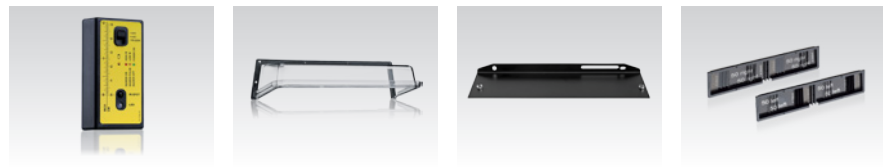
## APPLICATIONS

- Safety of linear, telescopic and curved automatic sliding doors.

## EASE OF INSTALLATION

- Settings using DIP-switches: critical environment, standard environment.
- Easy positioning and localising of the curtains thanks to mechanical adjustments and the spotfinder.
- Detection stability in sensitive areas.

## ACCESSORIES



Spotfinder

Rain accessory

Mounting bracket

Prisms

## TECHNICAL SPECIFICATIONS

<b>Technologie</b>	Active infrared background analysis
<b>Detection mode</b>	Presence
<b>Angle</b>	From -4° to +4° (adjustable)
<b>Output</b>	Solid-state-relay (free of potential, free of polarity) Max. contact current: 100 mA
<b>Supply voltage</b>	12 V - 30 V DC -5%/+10% (to be operated from SELV compatible power supplies only)
<b>Mounting high</b>	From 1.8 m to 3 m
<b>Degree of protection</b>	IP54
<b>Noise</b>	< 70 dB
<b>Temperature range</b>	-25 °C to +55 °C; 0-95% relative humidity, non condensing
<b>Norm conformity</b>	MD 2006/42/EC; ROHS 2 2011/65/EU; EN 12978:2009; EN IEC 62061:2005 SIL2; EN 61496-1:2012 ESPE Type 2; EN ISO 13849-1:2008 Performance Level «c» CAT.2 (under the condition that the door control system monitors the sensor at least once per door cycle)

*The specifications can be modified without prior notice.*

**DISCLAIMER** This document as well as all other enclosed documents (quotation / specification / other) are provided «as is» without warranties of any kind, either expressed or implied, including but not limited to the implied warranties of merchantability, fitness for a particular purpose, or non-infringement. / Information is supplied upon the condition that the persons receiving it will make their own determination as to its suitability for their purposes prior to use. In no event will BEA be responsible for damages of any nature whatsoever resulting from the use of or reliance upon information from this document or the products to which the information refers. / BEA has the right without liability to change descriptions and specifications at any time. / Prices, shipping and availability are subject to change without prior notice.



## VIO-S SAFETY SENSOR FOR SLIDING DOORS

BEA s.a. / LIEGE Science Park / Allée des Noisetiers 5 / 4031 Angleur • BELGIUM  
T +32 4 361 65 65 / F +32 4 361 28 58 / E info@bea.be

www.bea-pedestrian.be

A HALMA COMPANY



**BEA**  
OPEN UP NEW HORIZONS